

# SEP sesam

Online/Hot Backup & Restore for Databases and Application Protection



**SEP**

Global Storage Management



# Table of Contents

## Databases

Oracle	4
Ingres	4
IBM DB2 UDB	5
IBM Informix Dynamic Server	5
Microsoft SQL Server	6
MySQL Server	6
PostgreSQL Server	7

## Applications

Microsoft Exchange Server	8
Open-Xchange Server	8
IBM Lotus Notes and Domino Server	9
Novell	9
Scalix Server	10
Zarafa Server	10
Microsoft Sharepoint Portal Server	11
SAP	11

## Innovative data protection

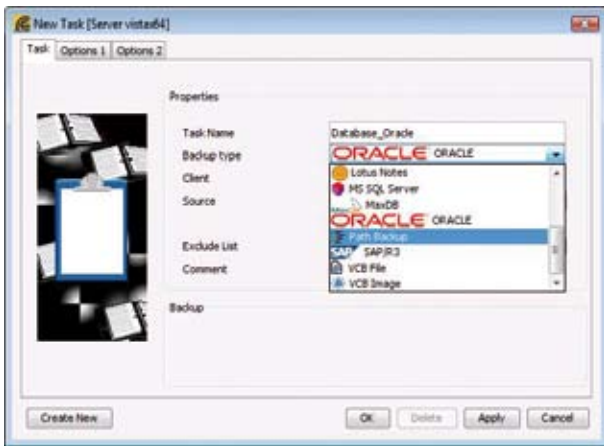
When it comes to database and application recovery, SEP has a clear goal in mind—simplifying the complexity of database backups while increasing availability. SEP sesam software provides high-performance, online/hot backup and recovery of business critical databases and applications. Organizations can manage all aspects of backup and recovery operations centrally from intuitive, graphical user interfaces, providing consistent data protection policies for the whole enterprise. No other vendor today provides the same amount of solutions across leading platforms to address the complex challenges of database and application backup and recovery.

# Databases

## Online/Hot Backup & Restore

### Oracle

SEP sesam for Oracle integrates Oracle Recovery Manager (RMAN) to deliver online/hot, high-performance backup and recovery for Oracle environments, including Oracle Real Application Clusters (RAC). SEP sesam software was the first to eclipse both the 1 terabyte per hour and 2 terabyte per hour Oracle backup barriers - SEP also continues to help redefine Oracle backup and recovery. Today, SEP offers unprecedented techniques for protecting Oracle databases, from integrated archiving capabilities to Instant Recovery.



### Product Highlights

- **Backup and Restore Flexibility** - Back up and restore Oracle at the database, tablespace, and data file level. Archived redo logs are also protected.
- **XML Archiving** - Integrated capability enables archiving of Oracle data in XML format for long-term storage.
- **Wizard-Based Configuration** - Integrated wizard on UNIX, Windows, and Linux simplifies configuring Oracle backup or recovery by automating the creation of RMAN scripts.

### Ingres

INGRES

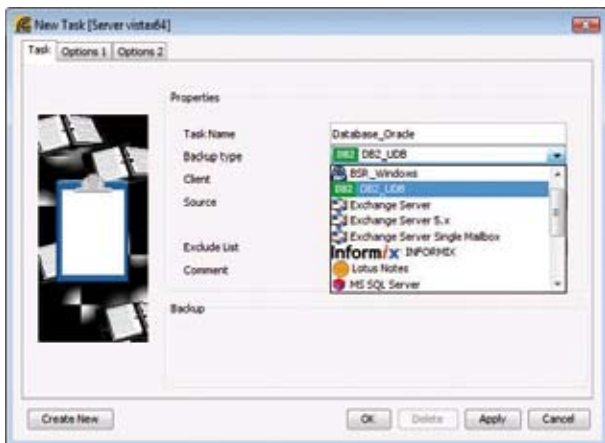
SEP sesam for Ingres integrates Ingres Recovery Manager to deliver online/hot, high-performance backup and recovery for Ingres environments. While SEP continues to demonstrate performance leadership in this space - SEP sesam software was the first to offer an professional Ingres Online/Hot Backup Modul. Today, SEP offers unprecedented techniques for protecting Ingres databases from integrated archiving capabilities to instant recovery.

### Product Highlights

- **Complete database backup** - In this case SEP sesam calls Ingres executable ckpdb to perform a checkpoint. After saving all files of the checkpoint, a backup of the dump and journal directories is made. With this information a complete disaster recovery of the database is possible.
- **Checkpoint backup** - In this case SEP sesam acts as Media Manager. Instead of the default tar command, database files are directly saved by SEP sesam Server. To use SEP sesam as media manager an adopted check point template file has to be created:
- **Disaster Recovery** - The database must exist before it can be recovered; SEP sesam backup logs can help you to identify the data locations
- The SEP sesam Ingres Database Online/Hot Backup Module has been fine-tuned to the needs of Ingres users and their high requirements of availability and reliability of the backup software.
- SEP AG allows **undisturbed backups and undisturbed restores in running databases** with the SEP sesam Ingres Database Online/Hot Backup Module.
- With this solution SEP sesam 3.6 is **the first data backup software that has been certified by Ingres** for DBMS 9.2 & 9.3.
- The SEP sesam Backup Client and Ingres DBMS are available as Open Source Business solutions.

## IBM DB2 UDB

SEP sesam online/hot backup for IBM DB2 Universal Database (sdb2) provides a XBSA interface between DB2 and SEP sesam for saving data of DB2 databases with a SEP sesam server. The XBSA API specifies the access from DB2 backup utility to a backup application. SEP sesam will manage the whole backup media handling like loading the correct tapes, while DB2 backup decides which data has to be backed up or recovered.

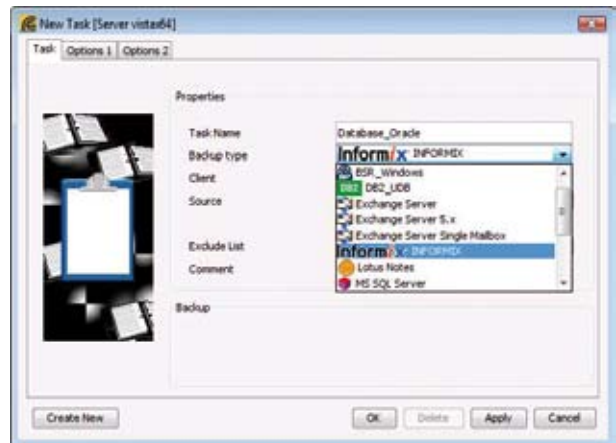


### Product Highlights

- **Flexible Backup Options** - Supports full or incremental database online/hot backup and backup of archive logs via the user exit program.
- **Scheduling Facilities** - Leverage the SEP sesam scheduler for automated, unattended DB2 backups.
- **Wizard-Based Configuration** - Step-by-step configuration of DB2 back up and recovery via an intuitive, graphical, wizard-based interface.

## IBM Informix Dynamic Server

SEP sesam online/hot backup for Informix (sib) provides a XBSA interface between Informix and SEP sesam for saving data of Informix databases to a SEP sesam server. XBSA API specifies the access from Informix ONBAR utility to a backup application. SEP sesam will manage the whole backup media handling like loading the correct tapes, while ONBAR decides which data has to be backed up or recovered.

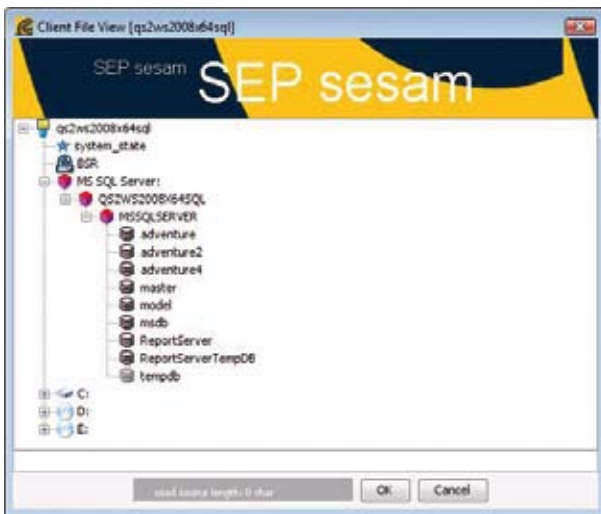


### Product Highlights

- **Continuous Logical Log Backup** - Configure automated logical log backup to help prevent logical logs from filling up and locking up the database server.
- **Flexible Backup Options** - Backup and restore at the dbspace, blobospace, and logical log file level.
- **Parallel Backup and Restore** - Enables administrators to run more than one tape device at a time for a single Informix backup or restore, helping reduce the time necessary to complete the operation.

## Microsoft SQL Server

SEP sesam for Microsoft SQL Server ensures several kinds of backup methods, which decreases the backup size. It is possible to restore a Microsoft SQL database in full or incremental mode.

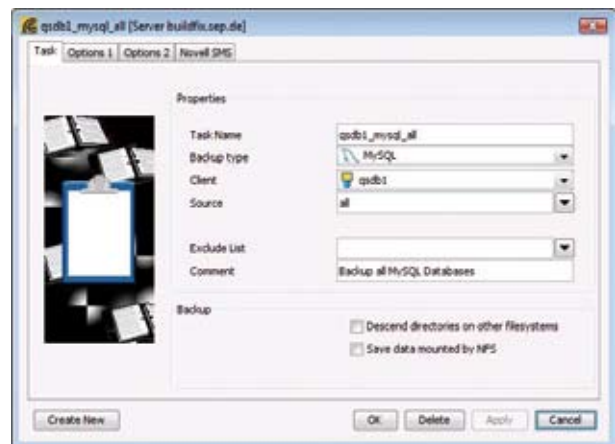


### Product Highlights

- **Several backup types** - SEP sesam supports full, copy, differential and incremental (transaction log) backup.
- **Cross restore of databases** - Allows restoring a SQL database into another one and also into another instance.
- **Interactive browsing of databases** - With the assistance of the SEP sesam client browser it is possible to select the database(s) for backup via GUI

## MySQL Server

SEP sesam for MySQL Server delivers comprehensive data protection for MySQL Server and SQL Server databases. It provides the performance and flexibility required for effective backup and recovery operations within large MySQL Server environments.

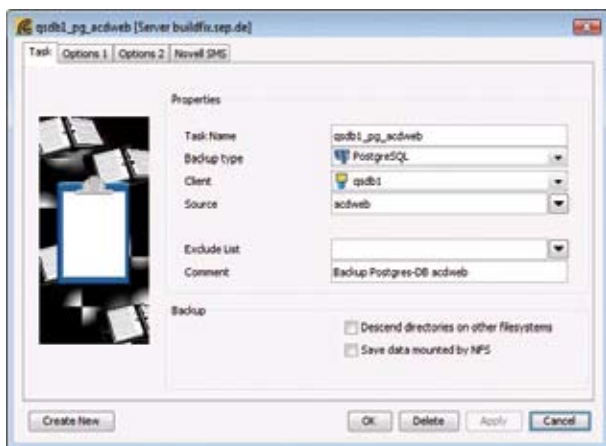


### Product Highlights

- **Flexible Data Protection Options** - Backup and recovery of databases, differentials, files, filegroups, and transaction logs. Read-only data backed up less frequently.
- **Faster Recovery** - Faster recovery if only damaged pages are recovered. Verify only restores can be used to verify SQL contents of a backup image without actually restoring the data.
- **Point-in-Time Recovery** - Recovers SQL databases to the exact point in time or transaction log mark by bringing only the transactions that occurred prior to a user-specified date and time.

## PostgreSQL Server

SEP sesam for PostgreSQL Server delivers comprehensive data protection for PostgreSQL Server and SQL Server databases. It provides the performance and flexibility required for effective backup and recovery operations within large PostgreSQL Server environments.



### Product Highlights

- **Flexible Data Protection Options** - Backup and recovery of databases, differentials, files, filegroups, and transaction logs. Read-only data backed up less frequently.
- **Faster Recovery** - Faster recovery if only damaged pages are recovered. Verify only restores can be used to verify PostgreSQL contents of a backup image without actually restoring the data.
- **Point-in-Time Recovery** - Recovers PostgreSQL databases to the exact point in time or transaction log mark by bringing forward only the transactions that occurred prior to a user-specified date and time.

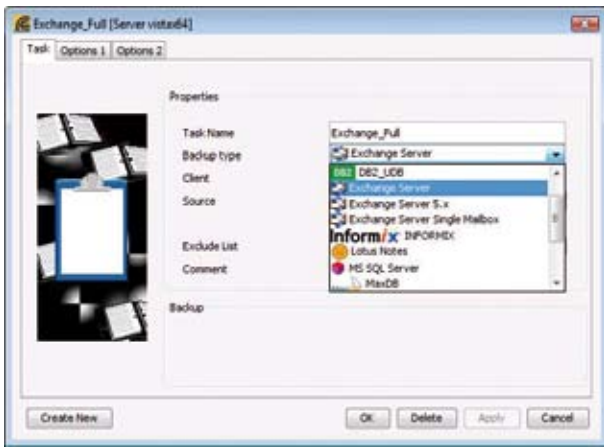
# Application

## Online/Hot Backup & Restore



### Microsoft Exchange Server

SEP recognizes the need for nondisruptive mechanisms to protect Exchange data, along with all data in the enterprise. SEP sesam for Microsoft Exchange helps to provide the performance and flexibility required for effective backup and recovery operations within large Exchange environments.



### Product Highlights

- **Online/Hot Backup** - Complete, nondisruptive protection of Exchange database and mailbox components, including incremental mailbox backup.
- **Flexible Restore Options** - Rapid, granular recovery of databases and mailboxes, including support for performing individual message restores.
- **Advanced Exchange Integration** - Leverage advanced features, including Single Instance Store (SIS), global exclusion, and storage group multiplexing. Volume Shadow Copy Services (VSS) integration Client.

### Open-Xchange Server

The SEP sesam online/hot backup extension for Open-Xchange enables a complete backup of the OX-environment on file basis in a logical level (mailbox and single mail). With the simple and clearly arranged Restore-GUI the selection of any user mail as well as its restore on the original or another mailbox is possible. There are numerous functions available for the automatic flow of restore and recovery which makes it easy for the administrator to reconstruct the needed emails. So-called public folders and the creation of (new) restore folders is also supported.

### Product Highlights

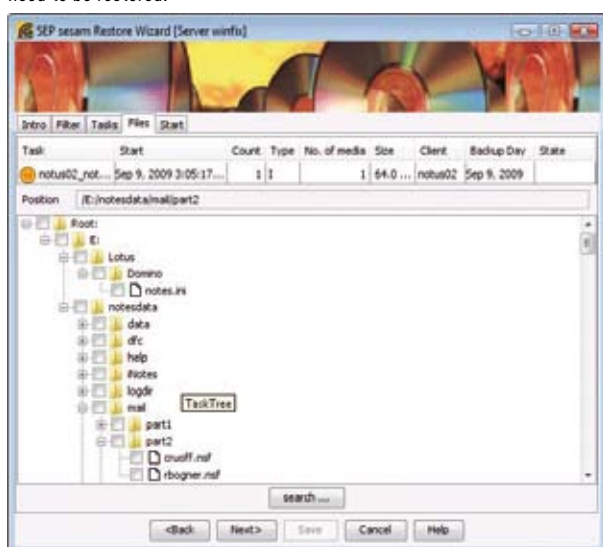
- **Online/Hot Backup** - Complete, nondisruptive protection of Open-Xchange database and mailbox components, including incremental mailbox backup.
- **Flexible Restore Options** - Rapid, granular recovery of databases and mailboxes, including support for performing individual message restores.





## IBM Lotus Notes and Domino Server

SEP offers high-performance backup and recovery for Lotus Notes and Lotus Domino server with SEP sesam for Lotus Notes. Administrators may leverage intuitive GUIs to help set consistent backup policies across the enterprise and to quickly identify critical Lotus files or databases when they need to be restored.



### Product Highlights

- **Backup Method Flexibility** - Support for scheduled, unattended backups, manual backups, and user backups, which allow end users to back up and restore prespecified Lotus data.
- **Alternate Restoration Techniques** - With backups not tied to a specific backup server, SEP sesam software may restore Lotus data either on an alternate system or in an alternate directory.

## Novell

SEP sesam is the perfect solution for Novell environments whether exclusively Novell shops or for IT departments running multiple operating systems. SEP sesam, now available for all of Novell's products including Netware, OES2, SUSE Linux Enterprise Server (SLES), Open Workgroup Suite and GroupWise, is second to none.

SEP sesam has been certified by Novell and SEP sesam's uncompromising software standards and design means SEP sesam is the perfect solution for enterprise data back up, restore and disaster recovery. SEP sesam offers native server support for all Novell OS (and all other Linux derivatives), Windows, UNIX and BSD 4.3. SEP also supports one of the industry's greatest number of client operation systems.

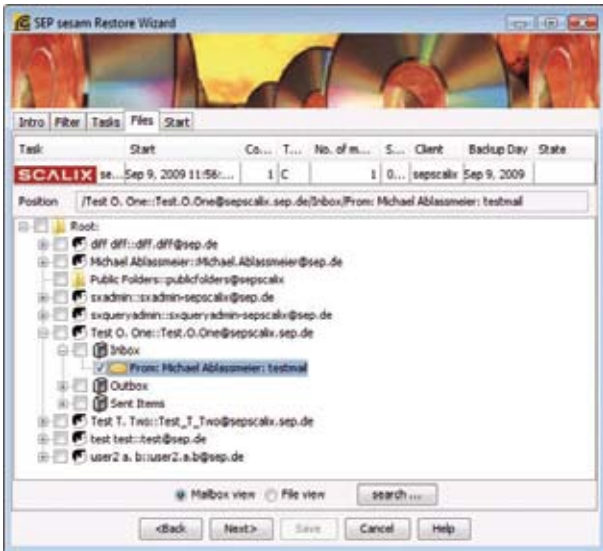
### Product Highlights

- **Reliable backups using Novell TSAs** - Scheduled backups use Novell TSA technology. Online/Hot backup and restore capability allows system administrators to secure NSS, eDirectory and GroupWise files.
- **eDirectory** - Backup and restore eDirectory files and settings.
- **Novell Storage Services (NSS)** - NSS volumes are easily restored should they be lost, corrupted or even if an individual file needs to be restored with all permissions.
- **OES2 cluster support** - NSS Cluster and OES2 cluster support is available and supports both OES Linux and OES Netware.
- **Simple installation** - Provides easy, management interface-based installation for servers and clients whether running Novell OES2 or other operating systems.

## Scalix Server



The SEP sesam Online/Hot Extension for Scalix allows simple and reliable installation on Linux servers to backup all Scalix Groupware options without interrupting the operation of the groupware server. The easy license model insures a cost-effective backup solution for every Scalix Mail/Groupware installation. SEP secures all data, supports backup and restore of single mailboxes and has the ability to create snapshot data backups from the logical volume.

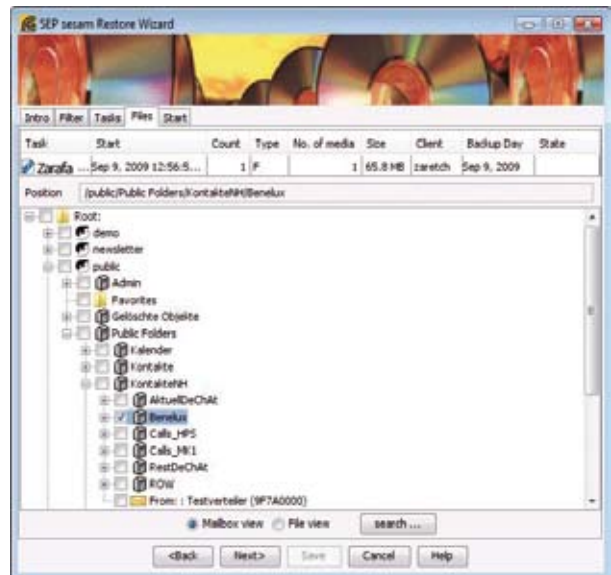


### Product Highlights

- **Backup Method Flexibility** - Support for scheduled, unattended back ups, manual back ups, and user back ups, which allow end users to back up and restore prespecified Scalix data.
- **Alternate Restoration Techniques** - With back ups not tied to a specific backup server, SEP sesam software may restore Scalix data either on an alternate system or in an alternate directory.
- With the SEP sesam GUI it is possible to access and restore single mail boxes. The file structure of the Scalix environment can also be restored.
- **Public Folder Restore**

## Zarafa Server

The SEP sesam online/hot backup extension for Zarafa allows simple and reliable installation on Linux servers to back up all Zarafa Groupware options without interrupting the operation of the groupware server. SEP sesam is perfectly adapted to the technology of the Zarafa Server. This enables the simple and reliable backup of all groupware data. Proven restore options allowing a simple administration and operation. SEP secures all data and supports backup and restore of single mailboxes. The easy license model ensures a cost-effective backup solution for every Zarafa Mail/Groupware installation.



### Product Highlights

- **Backup Method Flexibility** - Support for scheduled, unattended back ups, manual back ups, and user back ups, which allow end users to back up and restore prespecified Zarafa data.
- **Restore of single object (email, contacts, calendar, notes)**
- **Online/Hot Restore**
- **Intuitive restore GUI**

## Microsoft Sharepoint Portal Server

SEP sesam for SharePoint Portal Server extends the capabilities of SEP sesam software to include online/hot backups and restores of a Microsoft SharePoint Portal Server installation.

### Product Highlights

- **Flexible Restore Options** - Restores can be directed to the original location or to a different path.
- **Robust Data Integrity** - SPS data protection includes all portal content, including web store data, Microsoft Search Service system resources, SPS configuration information, the applications folder and any content sources that references the local file system. Protects profile, search and index databases.
- **Easy to Use** - One console can be used to protect SharePoint and Windows Services. Includes server farm configuration and single sign-on for databases.
- **Automated Backup** - Schedules can be set for automatic, unattended backups for local systems or remote client systems over the network.
- **Run-Time Detection** - The Dynamic detection of new databases and SharePoint hosts allows automatic SharePoint data protection.

## SAP

**SAP<sup>®</sup> Certified Integration**

The SEP sesam database online/hot backup module for SAP R/3 running on MaxDB/SAP DB and Oracle assures interruption free backup operation of the respective database directly to the backup media/device without an intermediate back up to the file system. The online/hot backup module integrates the database interface allowing all backup, restore and recovery available to execute without hindrance. Controlling and planning database backups by using the SAP R/3 environment tools or setting it through database priorities in the SEP sesam backup server.

### Product Highlights

- **Off-Host Backup** - Backup overhead shifts from critical to less critical systems, off-host backup is included in a SEP sesam advanced client.
- **Centralized Backup Operations** - Centralized management dramatically reduces the cost of backing up large SAP environments.
- **Database Support** - Support for Oracle and MaxDB (e.g. SAP DB) databases in SAP NetWeaver environments.
- **Oracle RMAN Support** - Leverage Oracle RMAN benefits when protecting SAP NetWeaver using Oracle.
- **SEP sesam is certified for integration with SAP Netweaver 7.10**
- **Flexible Implementation** - Performing database operations through SEP sesam software, or using the SAP tools (SAPD-BA interface) independently of SEP sesam software.

## About SEP AG

SEP has delivered highly reliable software solutions to multi-national industry partners for over 15 years. Working closely with open source and proprietary computer manufacturers they have developed industry-leading expertise developing network-wide, enterprise class data backup and recovery solutions. SEP sesam is installed and securing mission critical data in over 2000 enterprises and organisations in over 40 countries world-wide.

### Headquarter:

SEP AG  
Ziegelstrasse 1  
83629 Weyarn  
Germany  
Phone: +49 (0)8020 180 0  
Fax: +49 (0)8020 180 666  
Web: <http://www.sep.de>

### US Office:

SEP Software Inc.  
94 Benthaven Place  
Suite 100  
Boulder, CO 80305  
Phone: +1-303-417-6316  
Web: <http://www.sepsoftware.com>

All brand names and product names are registered trademarks and trademarks of their respective owners.